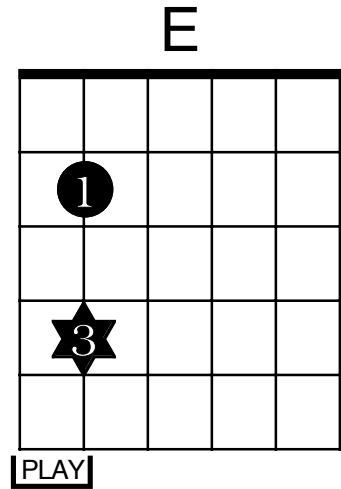
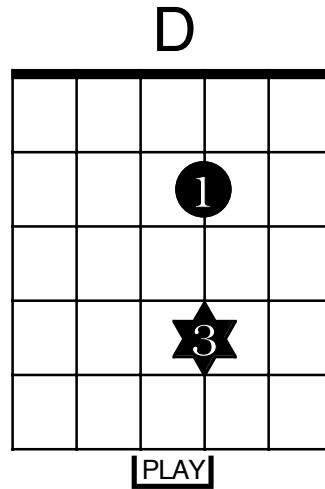
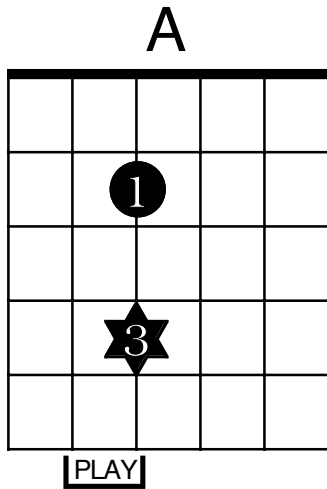


12 Bar Blues

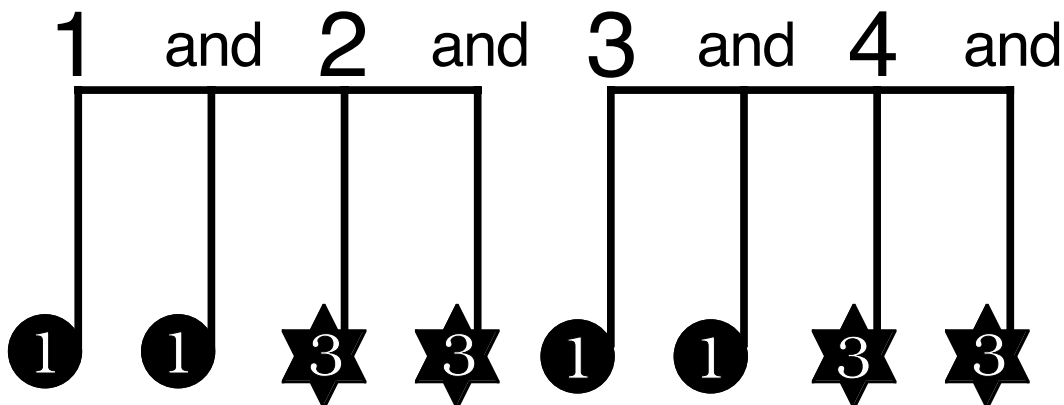
© Great Southland Music

To play this chord progression we are going to use 'rock chords', sometimes called 'power chords'. These chords are played with two strings only, the string finger one is holding and the one above it. Play these chords to the rhythm below.



Means finger 3 goes on and off here.
If you can't reach with finger 3 you can use finger 4.

Rhythm



12 Bar Blues

